



CHELSEA ISLAND
LONDON SW10

2 BEDROOM APARTMENT

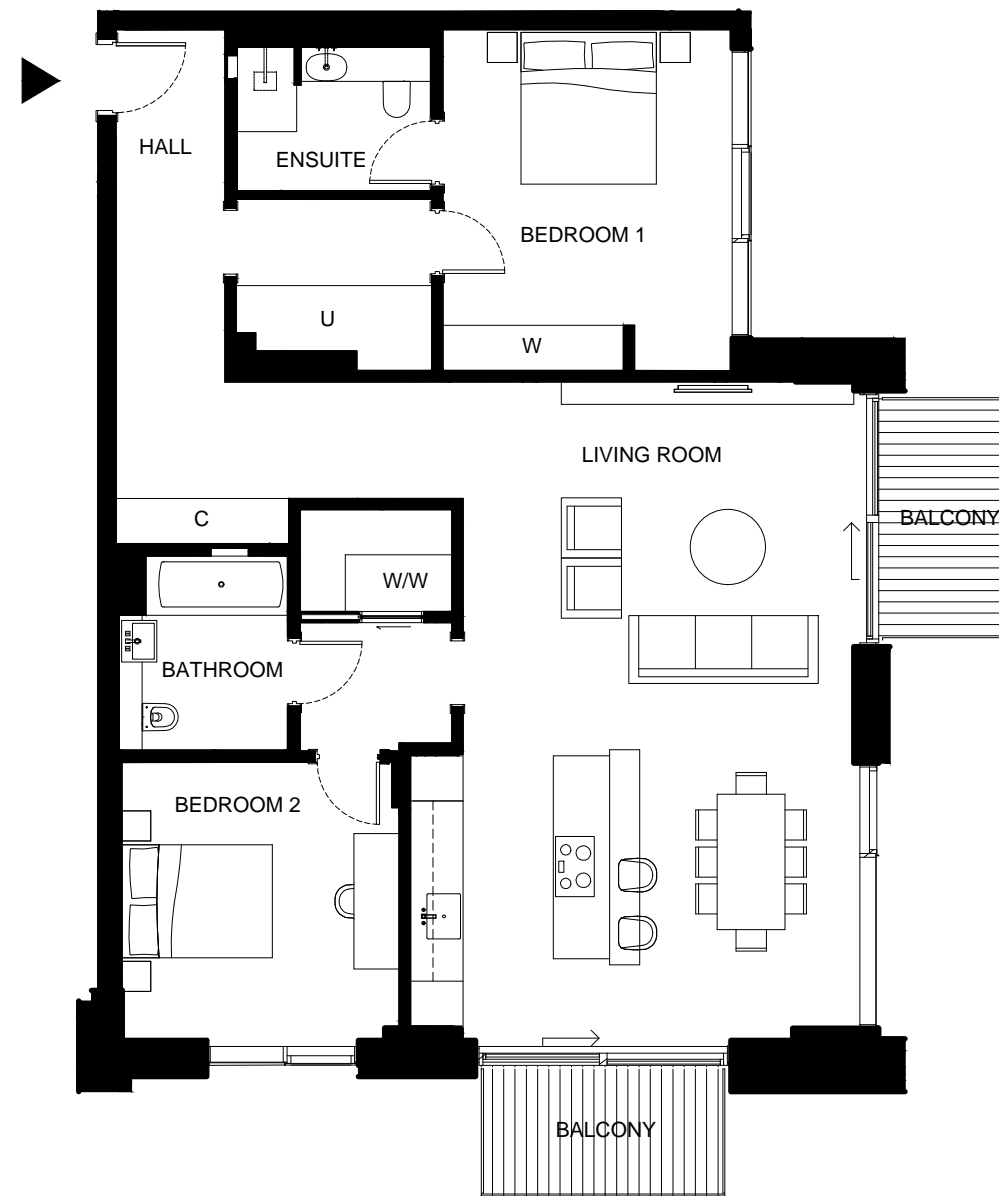
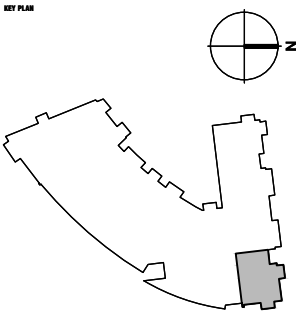
APARTMENT 35 LEVEL 1
APARTMENT 42 LEVEL 2
APARTMENT 49 LEVEL 3

Total Gross Internal Area = 1343 sq.ft / 125m²

Bedroom 1 = 14'-10" x 12'-7" / 4.5 x 3.8m

Bedroom 2 = 12'-5" x 12'-1" / 3.8 x 3.7m

Living/Kitchen = 29' x 19'-7" / 8.8 x 6.0m



KEY:
C Cupboard
U Utility Cupboard
W Fitted Wardrobe
WW Walk in Wardrobe

THESE DRAWINGS ARE FOR MARKETING PURPOSES ONLY.
FINAL LOCATION AND SET-OUTS TO BE CONFIRMED
DURING CONSTRUCTION PHASE.

MARKETING PLAN ONLY
NOT FOR CONSTRUCTION

Notes:
Measurements are the maximum room dimensions .
Floor layouts are subject to change at any time.
These drawings are for marketing purposes only